



© Next Hydraulics

MAXILIFT. EFFICIENCY ON THE WATER

**Marinized treatment specifications**

- **Shot blasting** of structural elements
- **Painting:**
  - Organic epoxy galvanizing primer 30-40 μ
  - Bi-component epoxy priming coat 60-70 μ
  - Bi-component polyurethan final painting 60-70 μ
- **NITOX treatment** on link pins
- **Rods treatment** with guarantee of 250 hours in salt spray test
- **Anti-corrosion treatment** or painting on all hydraulic valves
- **Stainless steel piping**
- "Offshore" hoses and **stainless steel hose terminals**
- **Stainless steel fittings**
- 500 hours **zinc based anticorrosion treatment** protection

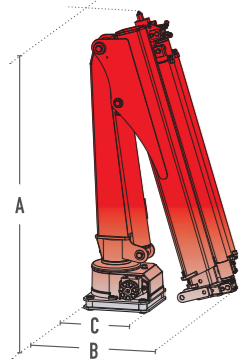


MAXILIFT. EFFICIENCY ON THE WATER

Maxilift: Special range of hydraulic cranes ideal for marine applications. Light, easy to use and install, they grant high protection against corrosion and long lasting lifetime.

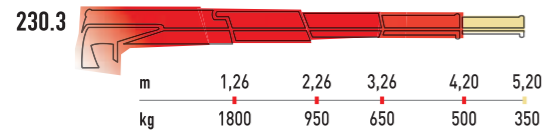
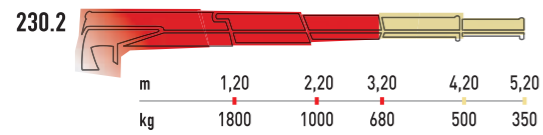


SPECIFICATIONS

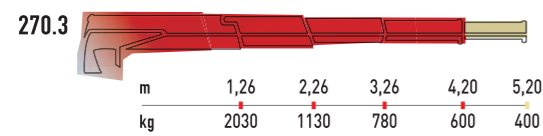
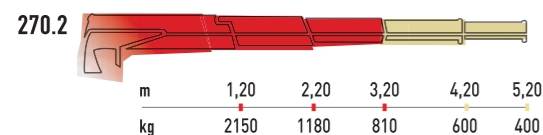


Mod.	Dimensions mm			Lifting capacity kNm	Slewing angle (worm screw)	Max angle slope	Basic crane weight kg
	A	B	C				
230	1420	790	310	22	360° (330°)	5°	225-275
270	1420	790	310	25	360° (330°)	5°	225-275
270 L	1510	1130	310	25	360° (330°)	5°	235-290
330	1550	820	370	32	360° (330°)	5°	270-345
380	1630	870	370	37	360° (330°)	5°	310-395

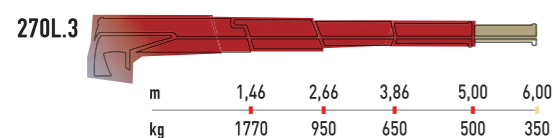
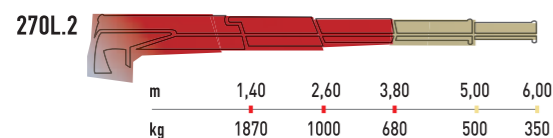
**230**



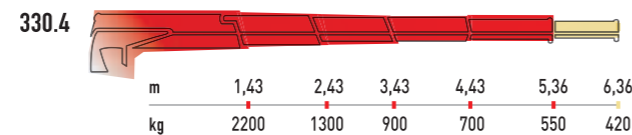
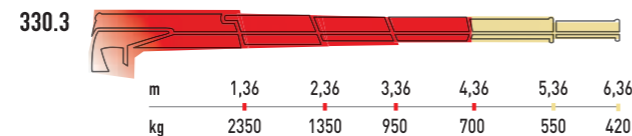
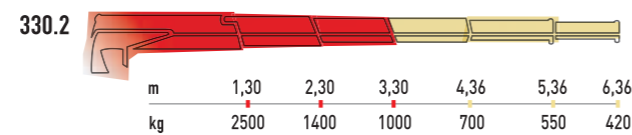
**270**



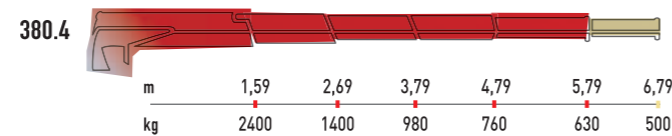
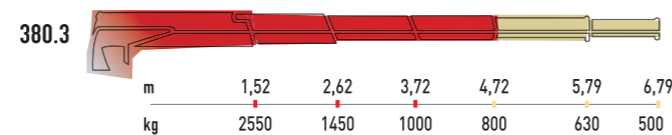
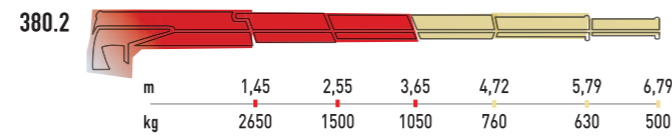
**270 L**



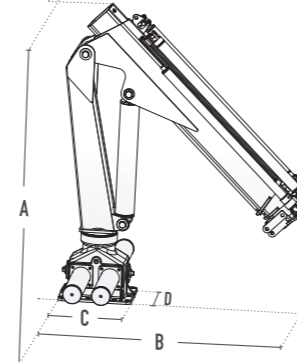
**330**



**380**

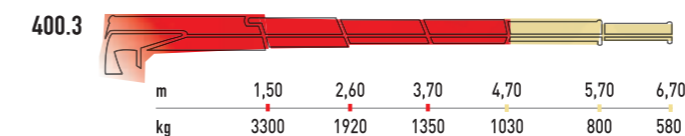
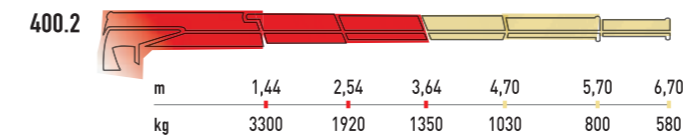


SPECIFICATIONS

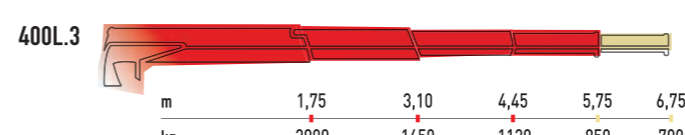
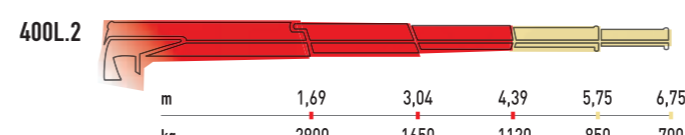


Mod.	Dimensions mm				Lifting capacity kNm	Slewing angle (double rack)	Max angle slope	Basic crane weight kg
	A	B	C	D				
ML 400	1830	1280	450	350	42	360° (295°)	15°	460-500
ML 400 L	1800	1450	450	350	42	360° (295°)	15°	490-540
ML 500	1830	1280	450	350	48	360° (295°)	15°	470-510
ML 500 L	1800	1450	450	350	48	360° (295°)	15°	500-550

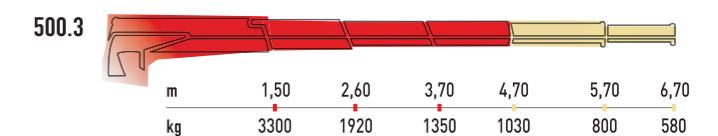
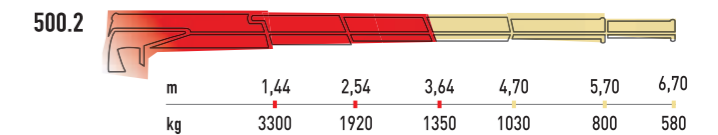
**400**



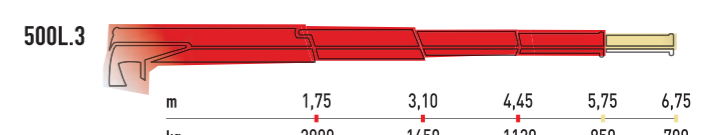
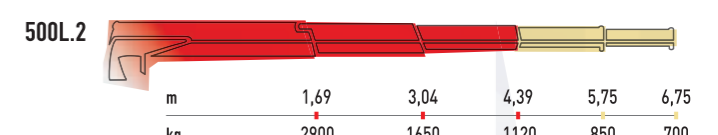
**400 L**



**500**



**500 L**



Hydraulic extensions

Optional manual extensions



Hydraulic winch on request