

# *SPECIFICATIONS*

SPEC. No. CT-2506  
DATE-JAN. 2014

---

**SPECIFICATIONS  
HYDRAULIC CRANE**

**MODEL:UNIC URW234-AU**

Specifications subject to change without notice.

---

**FURUKAWA UNIC CORPORATION**

*EXPORT TECHNICAL DEPT  
TOKYO JAPAN*

**UNIC CRANE PERFORMANCE**  
**MODEL : URW234-AU**

**CRANE CAPACITY:**

LIFTING CAPACITY	: Max. 2330kg at 1.7m
HOOK HEIGHT	
ABOVE GROUND LEVEL	: Max. 9.7m
BELOW GROUND LEVEL	: Max. 9.9m with 4-part line
WORKING RADIUS	: Min 0.68m, Max. 8.43m

**BOOM:**

Four-section box beam type telescoping boom

Boom Length	
Retracted boom;	2.87m
Extended boom;	8.60m
Boom Extending Speed;	5.73m / 10 s
Boom Raising Speed;	1° to 76° / 7 s

**WINCH:**

Hydraulic motor driven, spur gear reduction, with automatic mechanical brake.

Single Line Pull;	5.64kN {575kgf}
Hoisting Speed	
Single line speed;	68.0m / min at 4th layer
Hook speed;	17.0m / min at 4th layer with 4-part line
Hook Block;	2300kg capacity, 2 sheaves with safety latch
Wire Rope	
Construction (JIS);	IWRC 6 × WS(26) GRADE B
Diameter × Length;	8mm × 54m
Breaking strength;	42.4kN {4320kgf}

**SLEWING:**

Hydraulic motor driven, worm gear reduction, worm self-locking brake

Slewing Range;	360° continuous rotation on a ball bearing race
Slewing Speed;	2.5 rpm

**OUTRIGGERS:**

	Vertical jacks and horizontal beams
Vertical Jacks;	Double acting hydraulic cylinders with pilot-operated check valves
Horizontal Beams;	Manual extension type
Outrigger Span	
Retracted;	1.546m
Extended;	2.6m
Mid-extended;	2.1m

**HYDRAULIC SYSTEM:**

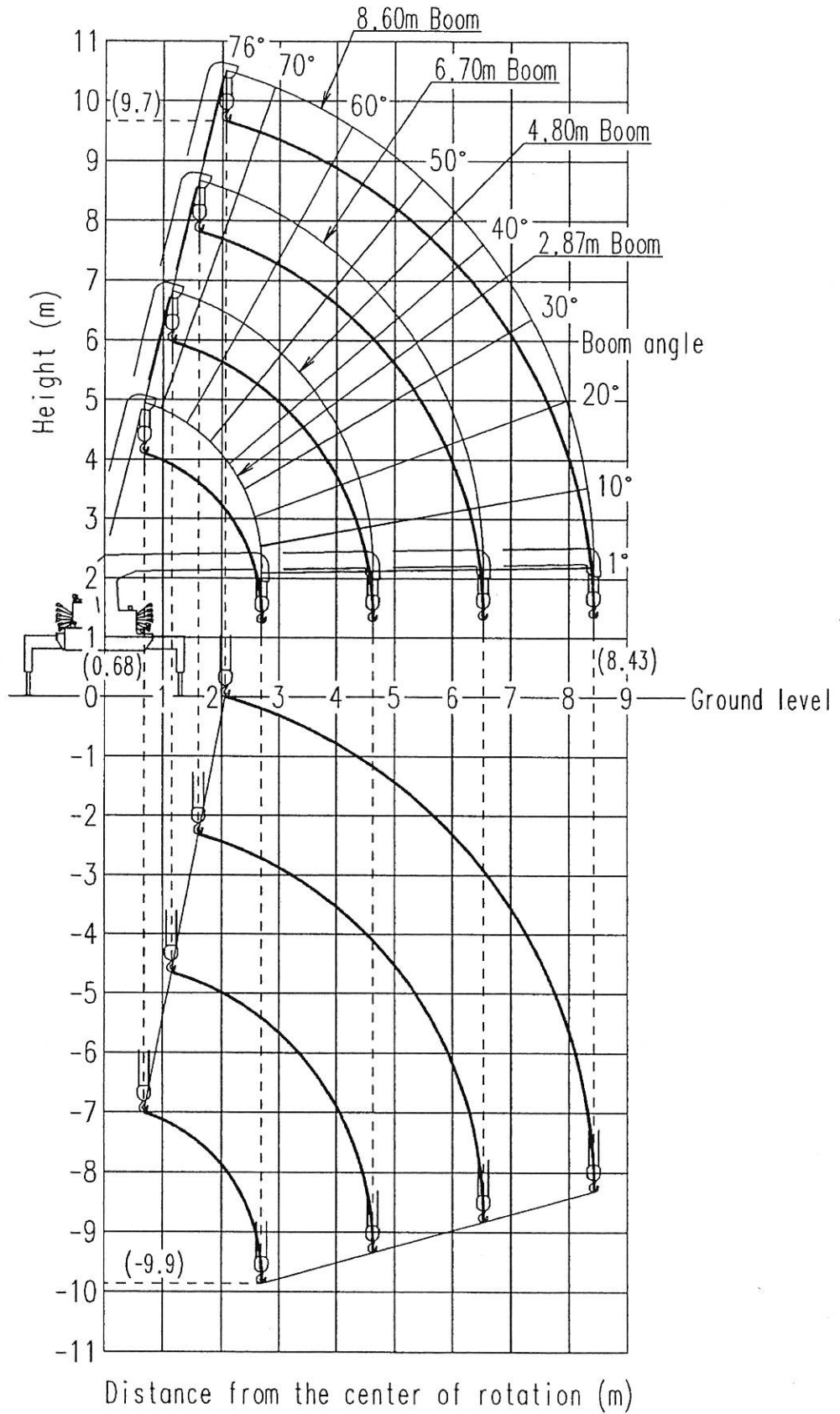
Hydraulic Pump	
Type;	Gear type
Rated pressure;	20.6MPa {210kgf/cm <sup>2</sup> }
Rated delivery;	53 ℓ/min.
Rated revolution;	1700rpm
Hydraulic Valves	
Control valve;	Multiple control valve, spring centered, spool-type, with pressure relief valve
Pressure relief valve setting;	20.6MPa {210kgf/cm <sup>2</sup> }
Counterbalance valve;	Boom raising and boom telescoping cylinders
Pilot-operated check valve;	Outrigger cylinders
Hydraulic Actuators	
Hydraulic motors;	Hoisting: Axial plunger type Slewing: Trochoid type
Hydraulic cylinders;	Double acting type 1 × Boom raising cylinder 2 × Boom telescoping cylinder 2 × Outrigger cylinder
Oil Tank;	22 ℓ capacity

**SAFETY DEVICES:**

1. Pressure relief valve for hydraulic circuit
2. Counterbalance valves for boom raising and boom telescoping cylinders
3. Pilot-operated check valves for vertical outrigger cylinders
4. Boom angle indicator with load indicator
5. Hook safety latch
6. Automatic mechanical brake for winch
7. Digital loadmeter
8. Automatic stop for overwinding
9. Overwinding alarm
10. Warning horn
11. Level
12. Emergency stop button
13. Automatic lock mechanism for slewing
14. Overloading alarm
15. Automatic stop for overloading
16. Outrigger interlock
17. Alarm for un-stored boom and outriggers

**Note:** The figures in relation to the speed are on the basis of no-load running at rated oil flow condition.

**WORKING RANGE:**



**Note:** The above figures are based on no-load condition and do not include the deflection of the boom.

**RATED LOADS:**

Unit : kg

Working Radius (m)	Boom length			
	2.87m	4.80m	6.70m	8.60m
1.7	2330	2330		
2.0	2030	2030		
2.2	1830	1830		
2.5	1530	1530	1230	
3.0	(2.70) 1430	1280	1230	
3.5		1080	1030	680
4.0		980	880	680
4.5		(4.63) 830	780	600
5.0			680	530
5.5			630	480
6.0			580	430
7.0			(6.53) 530	360
8.0				310
8.43				290

( ) : Working radius

**CAUTION**

1. Fully extend all outriggers on solid, level surface leveling vehicle.
2. Rated loads shown in the chart are based on the crane strength rather than stability.
3. Rated loads shown must be reduced in accordance with vehicle weight, loaded condition of truck, crane mounting position, wind, ground condition and operating speed.
4. The mass of hook (30kg), slings, and any accessories attached to the boom or loadline must be deducted from the above rated loads in the chart.
5. In accordance with our policy of constant product improvement, all specifications are subject to change without notice or obligations.

TITLE

UNIC HYDRAULIC CRANE  
FOR EXPORT : REAR BOOM

SCALE 1/20  
UNIT mm

DATE JAN. 2014

DRAWING NO. B-529240

MODEL

URW234-AU

DRN

T. NAKAJIMA

CKD

T. ITO

APPD

J. KANAZAWA

**FURUKAWA UNIC CORP.**

